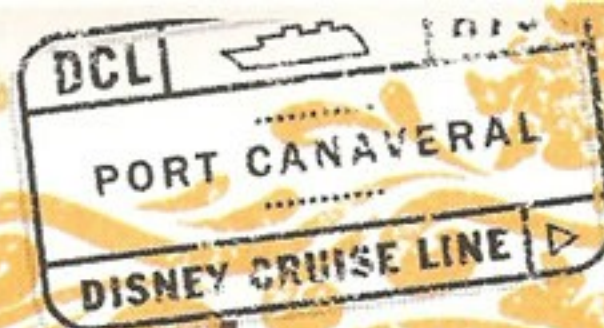


DISNEY MAGIC

Personal Navigator:

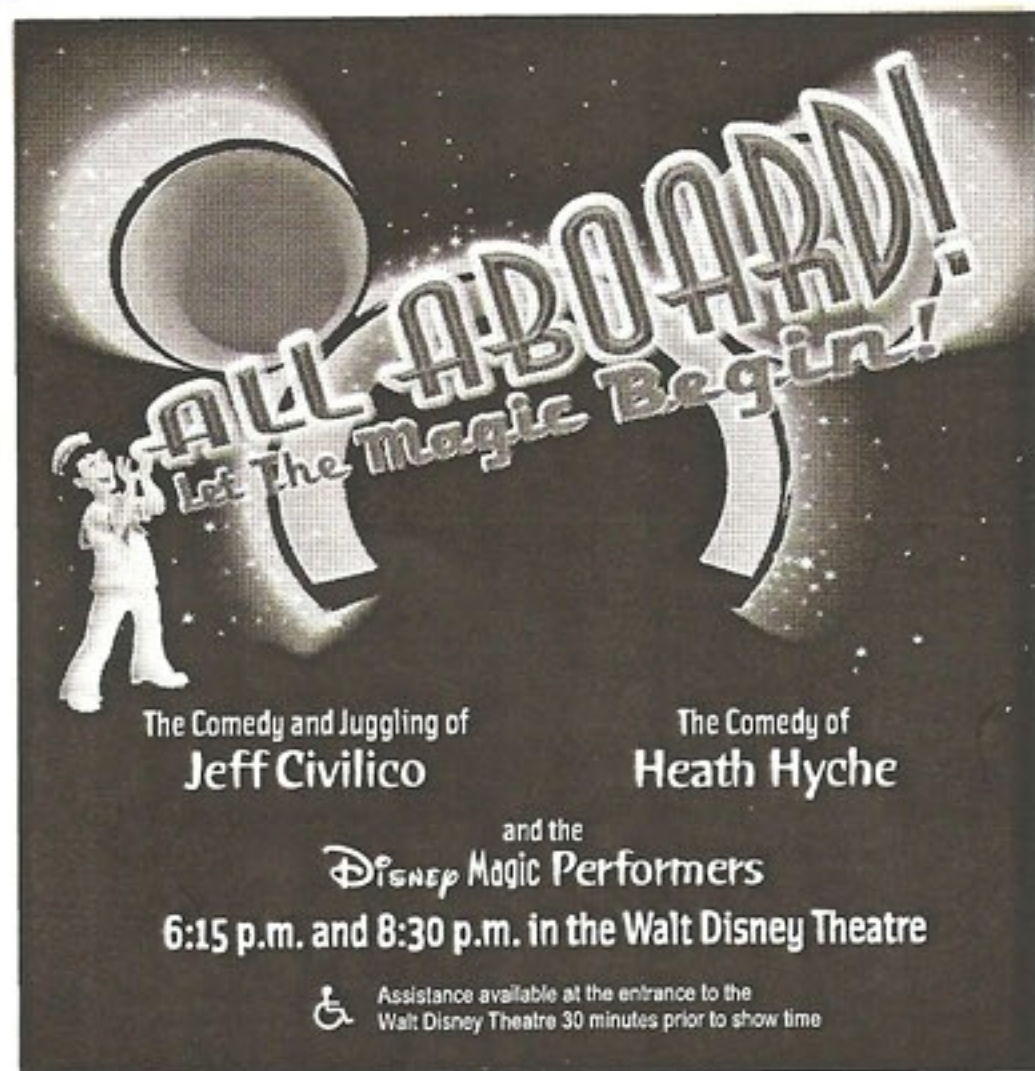


SHIP DIRECTORY

Animator's Palate	Deck 4, Aft
Art Gallery	Deck 4, Midship
Buena Vista Theatre	Deck 5, Aft
Cove Café	Deck 9, Midship
Discover Shopping Desk	Deck 3, Midship
Disney Vacation Club Desk	Deck 4, Midship
Diversions	Deck 3, Forward
Flounder's Reef Nursery	Deck 5, Aft
Future Cruise Desk	Deck 4, Midship
Goofy's Galley	Deck 9, Aft
Goofy's Pool	Deck 9, Midship
Guest Services	Deck 3, Midship
Hair Braiding Stand	Deck 9, Midship
Health Center	Deck 1, Forward
Lumière's	Deck 3, Midship
Lobby Atrium	Deck 3, Midship
Mickey's Mates	Deck 4, Midship
Mickey's Pool & Slide	Deck 9, Aft
Oceaner Club	Deck 5, Midship
Oceaner Lab	Deck 5, Midship
Ocean Quest	Deck 2, Midship
Outlook Bar	Deck 10, Forward
Palo	Deck 10, Aft
Parrot Cay	Deck 3, Aft
Pluto's Dog House	Deck 9, Aft
Pinocchio's Pizzeria	Deck 9, Midship
Preludes	Deck 4, Forward
Promenade Lounge	Deck 3, Aft
Quarter Masters	Deck 9, Midship
Quiet Cove Pool	Deck 9, Forward
Rockin' Bar D	Deck 3, Forward
Sessions	Deck 3, Forward
Shore Excursions	Deck 3, Midship
Shutters	Deck 4, Aft
Signals	Deck 9, Forward
Studio Sea	Deck 4, Midship
The Stack	Deck 11, Midship
Topsider Buffet	Deck 9, Aft
Treasure Ketch	Deck 4, Midship
Up Beat	Deck 3, Forward
Vista Spa and Fitness Center	Deck 9, Forward
Walt Disney Theatre	Deck 4, Forward
Wide World of Sports Deck	Deck 10, Forward

OPERATING HOURS

Art Gallery	7:00 p.m. - 8:30 p.m.
Disney Vacation Club Desk	5:00 p.m. - 8:00 p.m.
Goofy's Pool	6:00 a.m. - 12:00 mid
Guest Services Desk	24 Hours
Health Center	9:30 a.m. - 11:00 a.m. 4:30 p.m. - 7:00 p.m.
Mickey's Mates	6:00 p.m. - 11:00 p.m.
Mickey's Pool	12:30 p.m. - 10:00 p.m.
Mickey's Slide	1:00 p.m. - 3:15 p.m. 4:30 p.m. - 5:30 p.m.
Oceaner Club	12:30 p.m. - 3:15 p.m. 5:00 p.m. - 12:00 mid
Oceaner Lab	12:30 p.m. - 3:15 p.m. 5:00 p.m. - 12:00 mid
Ocean Quest	12:30 p.m. - 3:15 p.m. 5:30 p.m. - 8:00 p.m.
Preludes (snacks)	5:45 p.m. - 6:30 p.m. 8:00 p.m. - 8:45 p.m.
Quarter Masters	2:00 p.m. - 12:00 mid
Quiet Cove Pool	12:30 p.m. - 12:00 mid
Shore Excursions Desk	12:00 noon - 3:15 p.m. 4:30 p.m. - 8:30 p.m.
Shutters	5:00 p.m. - 11:00 p.m.
Treasure Ketch	6:00 p.m. - 11:00 p.m.
Up Beat	6:00 p.m. - 11:00 p.m.
Vista Spa Fitness Center	4:15 p.m. - 8:00 p.m.
Vista Spa & Salon	12:00 p.m. - 10:00 p.m.



Welcome Aboard!

Adventures Away

Earn your status as VIP sailors at this high-energy celebration. Join your Cruise Director, *Christiaan*, the Cruise Staff and the Disney Characters as we kick-off the official start to your Adventures Away! 4:30 p.m. Goofy's Pool Stage, Deck 9

\$300 Dash for Cash Bingo

One game with a guaranteed jackpot of \$300 and learn about our raffle bonanza with spa treatments, artworks, shopping prizes and much more! Cards go on sale at 7:15 p.m., Game starts at 7:30 p.m. and will finish in time for dinner seatings. 7:15 p.m., Rockin' Bar D

Mickey Mania Game Show

Put your family's Disney knowledge to the ultimate test, or play along from our live studio audience. 7:30 and 9:45 p.m., Studio Sea

Magic Quest (Guests 18 and older)

Enjoy the wildest and wackiest scavenger team event on the seven seas! 10:15 p.m., Rockin' Bar D

Match Your Mate (Guests 18 and older)

Discover just how well you know, or don't know, your mate! This fun adult game show is always full of surprises. 10:45 p.m., Rockin' Bar D

DID YOU KNOW?

The 20,000 gallons of paint it takes to cover the Disney Magic could paint 2,000 average American Homes.

IMPORTANT NUMBERS

Fire / Security 7-3001
Medical EMERGENCY 7-3000
Health Center 7-1923
Guest Services Dial "O"
Character Hotline 7-PALS

Saturday

Date: February 9, 2008

Sunrise: 7:06 a.m., Set: 6:06 p.m.

ALL ABOARD: Approx. 3:45 p.m.

PORT DEPARTURE: 5:00 p.m.

Evening Attire: Cruise Casual
Animator's Palate: Show Dinner
Parrot Cay: Island Dinner
Lumière's: French Dinner

Drink of the Day: Bay Breeze

DINING HOURS

Consumers who order raw or partially cooked, ready-to-eat food of animal origin are hereby informed that the food is not sufficiently cooked to ensure its safety.

LUNCH

Goofy's Galley	12:00 noon - 3:30 p.m.
Parrot Cay	upon boarding - 2:15 p.m.
Pinocchio's Pizzeria	12:00 noon - 3:30 p.m.
Pluto's Dog House	12:00 noon - 3:30 p.m.
Topsider (welcome buffet)	12:00 noon - 3:30 p.m.

DINNER

Animator's Palate*	5:30 p.m. & 8:00 p.m.
Lumière's*	6:00 p.m. & 8:30 p.m.
Parrot Cay*	5:45 p.m. & 8:15 p.m.
Pinocchio's Pizzeria	4:30 p.m. - 6:00 p.m.
Pluto's Dog House	4:30 p.m. - 10:00 p.m.

* Pre-arranged seating assignments

LATE NIGHT SNACKS

Beat Street	11:00 p.m. - 12:00 mid
Goofy's Galley	7:00 p.m. - 11:00 p.m.
Pinocchio's Pizzeria	9:30 p.m. - 12:00 mid
Promenade Lounge	11:00 p.m. - 12:00 mid

ADDED FEATURES

Topsider Beverage Station	24 hours
Room Service	24 hours

BAR HOURS

Bars are solely for adults 18 and older, except during scheduled family events. Adults must be 21 and older to consume alcoholic beverages.

ON DECK

Cove Café	12:00 noon - 12:00 mid
Pinocchio's	12:00 noon - 8:00 p.m. 9:30 p.m. - 12:00 mid
Pluto's Dog House	12:00 noon - 10:00 p.m.
Signals	12:00 noon - 9:30 p.m.

LOUNGES

Preludes	6:00 p.m. - 9:00 p.m.
Promenade Lounge	12:00 noon - 12:00 mid
Studio Sea	Open during events only

BEAT STREET (18 and older after 9:00 p.m.)

Diversions	12:00 noon - 12:00 mid
Rockin' Bar D	7:00 p.m. - 1:00 a.m.
Sessions (guests 18 and older)	5:00 p.m. - 12:00 mid

To Change Dining Assignment

Requests for different seating times will be taken today:

> 12:00 noon - 3:30 p.m.
Rockin' Bar D

Palo Dining Option

Reservations for dinner will be taken on a first come basis today:

> 12:00 noon - 3:30 p.m.
Rockin' Bar D
> 3:30 p.m. - 5:00 p.m.
Please leave a voice mail 7-6843

Hair Braiding Appointments

Reserve for your hair braiding appointment today:

> 5:00 p.m. - 6:00 p.m.
Deck 9 Midship

Sports Schedule

Stop by Diversions and meet the Pub Master and check for the Disney Magic's broadcast schedule of sporting events playing this week. (Subject to satellite reception)

Tea with Alice and the Mad Hatter

Be sure to stop by Guest Services to reserve your special pass for one of two opportunities to have Tea with Alice and the Mad Hatter. Limited number available.

Cold & Flu Reminder

Please wash hands frequently and thoroughly, particularly before meals. Contact the Health Center by dialing 7-1923, should anyone in your party become ill.

	12:00	12:15	12:30	12:45	1:00	1:15	1:30
SPECIAL							
CHARACTER							
MOVIES							
FAMILY							
FAMILY							
FAMILY							
ADULTS							
ADULTS							
3-4 YRS.							
5-7 YRS.							
8-9 YRS.							
10-12 YRS.							
TEENS							

	1:45	2:00	2:15	2:30	2:45	3:00	3:15	3:30	3:45	4:00	4:15	4:30	4:45	5:00	5:15	5:30	6:45	6:00	6:15	6:30	6:45
SPECIAL																					
CHARACTER																					
MOVIES																					
FAMILY																					
FAMILY																					
FAMILY																					
ADULTS																					
ADULTS																					
3-4 YRS.																					
5-7 YRS.																					
8-9 YRS.																					
10-12 YRS.																					
TEENS																					

	7:00	7:15	7:30	7:45	8:00	8:15	8:30	8:45	9:00	9:15	9:30	9:45	10:00	10:15	10:30	10:45	11:00	11:15	11:30	11:45	12:00
SPECIAL																					
CHARACTER																					
MOVIES																					
FAMILY																					
FAMILY																					
FAMILY																					
ADULTS																					
ADULTS																					
3-4 YRS.																					
5-7 YRS.																					
8-9 YRS.																					
10-12 YRS.																					
TEENS																					

DSEA U

Just for the kids

Flounder's Reef Nursery
Infants and Toddlers (by reservation only)

Oceaneer Club 3 - 7 year olds (potty trained)

Oceaneer Lab 8 - 12 year olds

Ocean Quest 10 - 14 year olds

The Stack Teen Club 13 - 17 year olds

Disney Sea University

All children between the ages of 3 and 12 are invited to join in a great variety of Disney Character themed programs, games, crafts, experiments and more.

Participation Confirmation and Registration

Meet the Youth Activity Team in the Oceaneer Club on Deck 5 Midship. There, we will complete your child's registration, give you a pager and give your child a wristband. We will also tell you about all the fun and exciting activities, give you a tour of the Lab and answer any questions.

Family Time

All aboard! It's time to unwind and let the children explore and try out the slide. Come to the Oceaneer Lab on Deck 5 Midship for Family Time. We'll be open this afternoon from 12:30 p.m. to 3:15 p.m., with counselors available to answer any questions.

Family Time Tonight

We'll be open for the entire family! This is the perfect chance for you to stop in with the children, meet the counselors and explore the spaces designed for tons of fun during your cruise. Don't miss the Captain's Closet, a climb up to the Crow's Nest and a zip down the slide in the Oceaneer Club. You'll find more fun in the Oceaneer Lab where your child will conduct experiments, cool artwork and crafts, play video and computer games, and make more. See you there!

Ocean Quest

Ocean Quest will be open at various times each day for ages 10-14. A schedule will be delivered to the rooms for all our guests that fall within this age group. 10 - 14 year olds may enter and leave Ocean Quest at any time during '10 - 14 Time'. For secured programming children must check into the 10 - 12 age group.

Teens

Check Out The Stack 12:30 p.m., The Stack
Come and see where you will hang out this cruise. Find out about all the fun things this cruise.

411 10:30 p.m., The Stack
Come up to The Stack and hear the 411 on what fun things you can do all cruise long.

Mickey Mania 11:30 p.m., Studio Sea
Put your Disney knowledge to the ultimate test, or play along from our live studio audience.

Teen Dance 12:15 a.m., The Stack
Hang out with your new friends and join us for a dance.

Ocean Quest

411 10:00 p.m., Ocean Quest
Come and meet your counselors and fellow tweens as we get to know each other and what there is for you to do all week long in Ocean Quest.

Fun for the Whole Family

Walking Ship Tour 2:30 p.m., Preludes
Enjoy the beauty of the Disney Magic® with your Cruise Staff in this guided tour.

Adventures Away 4:30 p.m., Deck 9, Goofy Pool
Earn your status as VIP sailors at this high-energy celebration. Join your Cruise Director, Christiaan, the Cruise Staff and the Disney Characters as we kick-off the official start to your Adventures Away!

Live Music 5:15, 7:15, 9:45 and 10:45 p.m., Promenade Lounge
Enjoy live music as our duo, Chuy and Danielle as they play popular dancing and listening music.

\$300 Dash for Cash Bingo 7:15 p.m., Rockin' Bar D
\$300 guaranteed CASH prize to be won.
(Game over in time for dinner)

Mickey Mania 7:30 and 9:45 p.m., Studio Sea
Put your family's Disney knowledge to the ultimate test, or play along from our live studio audience.

Disney Disco 10:15 p.m., Studio Sea
Dance along to some of your favorite Disney Channel hits.

Adult Exclusive Entertainment

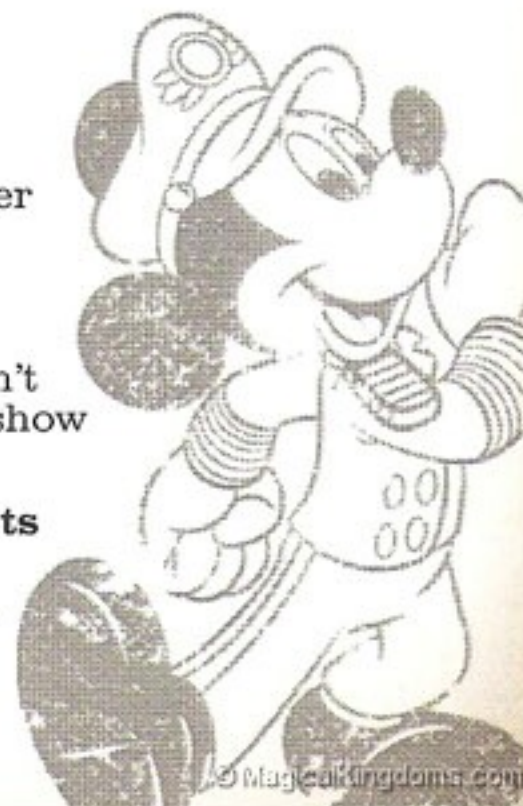
Piano and Vocal Favorites 7:30, 9:30, 10:30 and 11:30 p.m., Sessions
Join Tim Moss as he plays your favorite piano and vocal tunes.

College Club Social 10:00 p.m., Diversions
Meet other 18 - 21 year olds and share some laughs.

Magic Quest 10:15 p.m., Rockin' Bar D
Enjoy the wildest and wackiest scavenger team event on the seven seas!

Match Your Mate 10:45 p.m., Rockin' Bar D
Discover just how well you know, or don't know, your mate! This fun adult game show is always full of surprises.

Live Music and DJ Mike Spins the Hits 11:30 p.m., Rockin' Bar D
Bust a move out on the dance floor with live music by Soul Drive and our own DJ Mike as he spins the tunes that will keep you dancing all night long.



MORE TO ENJOY WHILE ONBOARD

Art Auction at Sea

Guess the Price of the Picasso! - Enter our guessing game tonight in the Art Gallery, Deck 4 Midship. One guess per person. The first 100 families to visit our Open House from 7:00 p.m. to 9:00 p.m. will receive a free work of art and a chance to pre-register for this cruise's auctions.

WIN some Money!

It's bingo time and cash prizes are up for grabs at every game. Select games will feature exciting giveaways from the Vista Spa, Park West, Disney Vacation Club, and jewelry from our Discover Shopping Expert!

Portrait Sets

LIFESTYLE PORTRAITS
IN THE LOBBY ATRIUM

7:00 p.m. - 8:30 p.m.

Plan Your Next Cruise

Already dreaming of your next magical cruise? Save 10% off most categories and receive an Onboard Credit for your next cruise by booking while onboard. Stop by the Future Cruise Sales Desk, Deck 4 Midship or call extension 7-2848 to learn more.

Relax and Pamper

The Vista Spa and Salon Team welcome you on board. Come in and see our world class facilities and lifestyle centre. Enjoy \$20 off any services worth over \$100 if booked and received today.

Map out your Port Shopping Day

Key West Shopping Information playing on channel 14. Coming soon to a theatre near you...the Grand Cayman and Cozumel Shopping Show. One lucky audience member will WIN jewelry! Premieres Monday at 1:00 p.m. in the Buena Vista Theatre, Deck 5 Aft, arrive 15 minutes early to make sure you get a seat.

Find your Vacation Paradise

Explore tropical hot spots around the world as a Member of Disney Vacation Club! Bask in the crystal blue waters of Mexico or relax under swaying palm trees in Hawaii—you can choose a different destination every year. Begin your bright vacation future at the Disney Vacation Club desk on Deck 4, Midship.

Savor the Grapes

Take advantage of our exclusive wine package promotion, where you can save up to 25% on the price of your wines over the course of the cruise. Classic package only \$179 and premium package just \$275.

Surf @ Sea

Be able to use both our computers and your own wireless with the same plan. Stop by Promenade Lounge, Deck 3, Aft for more information. \$0.75/minute, pay as you go. 100 minutes for \$55, 250 minutes for \$100 or 500 minutes for \$150.

Venture Out

There is no better way to see our ports of call, than through the eyes of a shore excursion. With more than 50 tours to choose from, there is something for everyone; including island tours, snorkeling trips, dolphin or stingray encounters, and relaxing beach days.

Call Home

Ship to shore calling is available from the convenience of your stateroom. For calls to the U.S., dial 8-1-Area Code-Number. For calls outside the U.S., dial 8-011-Area Code-Number. Unfortunately toll free or calling card numbers will not work. Calls charged at \$6.96 per minute.

In the shops on the Disney Magic®

Everyday there's something new at Mickey's Mates and Treasure Ketch! Be sure to visit our shops often for daily onboard promotions.

LIMITED EDITION PINS
> 7:15 p.m.

Each night in the Lobby Atrium!
Exclusive Disney Cruise Line® pins,
and pin sets only available at sea.

SAVE

ON GREAT ONBOARD
PORTRAIT OFFERS AT
SHUTTERS PHOTO GALLERY

Your friendly, professional photographers will help you "Capture the Magic" during your cruise. We have a range of photo packages that offer you great savings on your photographic memories. Having trouble with your digital camera? Stop by and ask us for help and advice. We also have a range of the latest digital cameras available in Shutters; just ask for a free demonstration.

CAPTAIN'S RESERVE CHARDONNAY

Exclusively available in Treasure Ketch and Up Beat. One bottle \$20.00, 2 bottles \$35.00. Enjoy while onboard.

JOHNNIE WALKER SELECTION

Includes Johnnie Walker Blue, Black, Green and Gold labels at great prices.

Up beat

IMPORTANT INFORMATION

Security Notice

Adults must also show a photo ID. You must be 18 years of age or older to go ashore unaccompanied. Guests under the age of 18 may go ashore unaccompanied when consenting parent, guardian or other responsible adult is with them at the gangway to provide their signature as authorization, which will be good for that entire port day. When visiting ports of call, all Guests (including children) must present their Key to the World Card.

Cold and Flu Reminder

Please wash hands frequently and thoroughly, particularly before meals. Contact the Health Center by dialing 7-1923, should anyone in your party become ill.

Inclement Weather

For the safety of all Guests, outdoor events may be changed to inside locations due to unforeseen weather conditions.

No Reserved Seats Policy

As a courtesy to all Guests we kindly advise that the saving of seats is not permitted in the Walt Disney Theatre, and the saving of the sun loungers is not permitted on Deck 9 and 10.

Walt Disney Theatre

Theatrical performances may use artificial fog, strobe lights, pyrotechnics and other special effects. For the safety of our performers and the comfort of those around you, the use of flash photography and video recording is prohibited.

Verandah Safety

Please do not leave any combustible materials on your balcony when not present in your stateroom for safety reasons.



Did you forget something?

Disposable cameras, sundries and sunscreen are available in Treasure Ketch.